

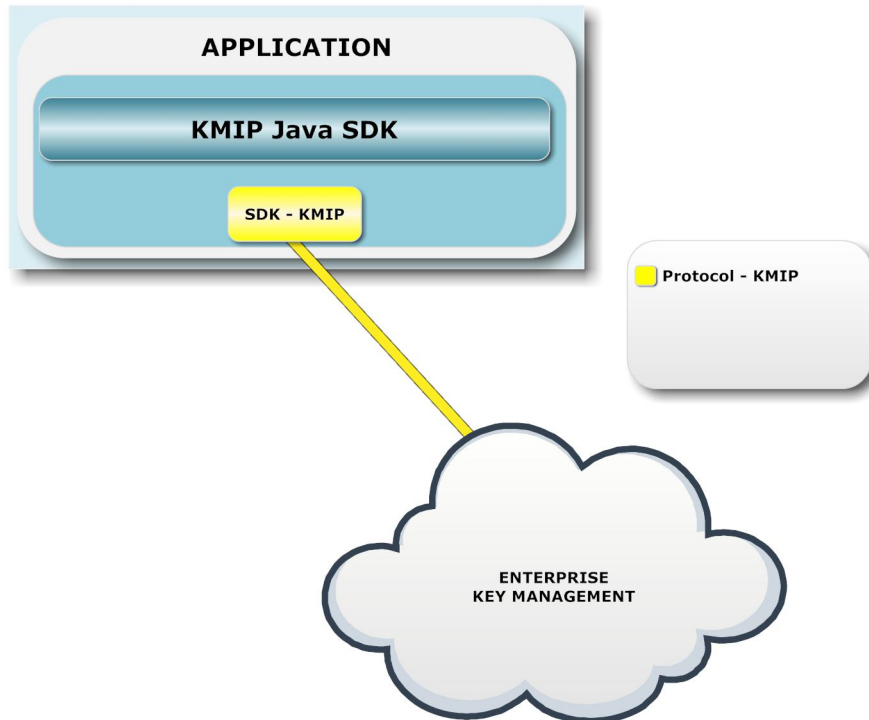
CRYPTSOFT

KMIP Java SDK



Cryptsoft's **KMIP SDKs** enable rapid addition of interoperable key management functionality to your existing application. KMIP-enable your application today and provide your customers with a complete vendor-independent key management solution!

Cryptsoft's **KMIP SDK** is easily and quickly integrated into your application adding full OASIS KMIP V1.0 and V1.1 functionality with a single consistent interface. The SDK includes extensive KMIP example code to get you up and running quickly. **KMIP-enable your application within days** not months, reducing your time to market!



- Guaranteed interoperability with all released KMIP server products
- Available as a binary SDK on a wide range of platforms
- Custom JDK/JRE ports available on request
- Symmetric key and Asymmetric key support
- Comprehensive example code
- Source license option
- Supports KMIP protocol v1.0 and v1.1
- Supports KMIP profiles:
 - Secret Data
 - Basic Symmetric Key Store and Server
 - Basic Symmetric Key Foundry and Server
 - Basic Asymmetric Key Store
 - Basic Asymmetric Key and Certificate Store
- Supports KMIP Object Types:
 - Certificate
 - Symmetric Key
 - Secret Data
 - Public Key
 - Private Key
 - Split Key
 - Template
 - Opaque Object
- Supported KMIP Operations:
 - Query
 - Locate
 - Destroy
 - Get
 - Create
 - Register
 - Get Attributes
 - Get Attribute List
 - Add Attribute
 - Modify Attribute
 - Delete Attribute
 - Activate
 - Revoke
 - Poll
 - Cancel
 - Check
 - Get Usage Allocation
 - Create Key Pair

Interoperable with
KMIP servers
from:

CRYPTSOFT



IBM



SafeNet



THALES



CRYPTSOFT

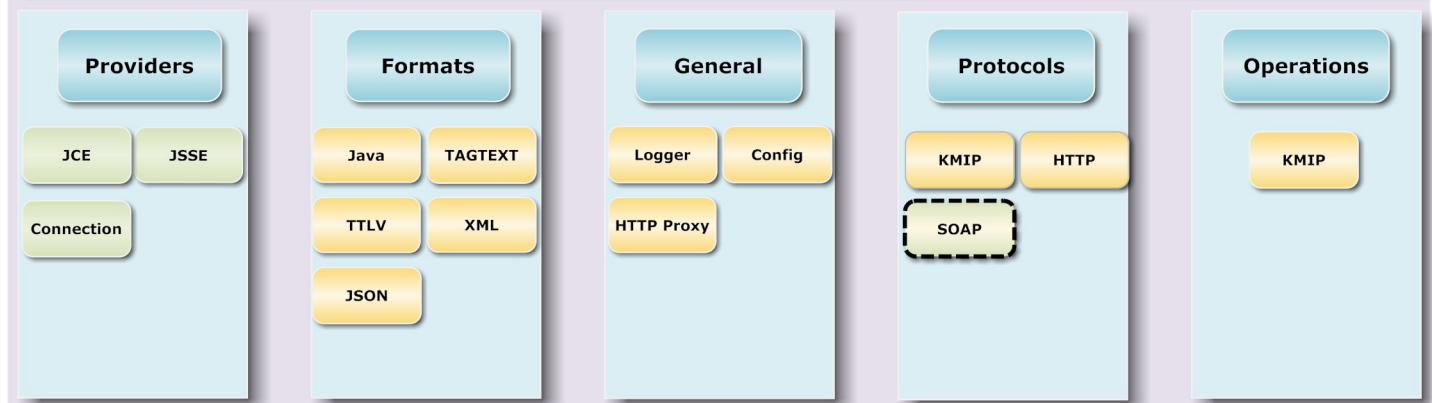
KMIP Java SDK



- Comprehensive example code including:

- Query / Locate / Register / Create / Destroy
- Query
- Parse TTLV XML
- Parse TTLV JSON
- Create Symmetric Key
- Create Symmetric Key With XML Attributes
- KeyStore API Example
- Locate With Different Options
- Locate Using XML
- Destroy
- Register
- Get Attributes
- Get Attribute List
- Get SDK Version
- Replay
- Create KeyPair
- Re-key
- Archive
- Recover
- Activate
- Attribute Update
- Use case 3.1.1
- Use case 3.1.2
- Use case 3.1.3
- Use case 3.1.4
- Use case 3.1.5
- Use case 3.2

KMIP API



- Supported Cryptographic providers:

- Sun/Oracle JCE
- IBM JCE
- RSA BSAFE Crypto-J (JCE)
- Bouncy Castle JCE

Supported Platforms:

- Oracle/Sun JDK 1.4.2
- Oracle/Sun JDK 1.5.0
- Oracle/Sun JDK/JRE 1.6.0
- IBM JDK/JRE 1.4.2